

Direct from Isolate Processor, this presents historical data on the quality of product you will receive. Each processed batch is unique and the laboratory results will vary. We do not represent that your order will match this COA, this is simply for sample purposes only.

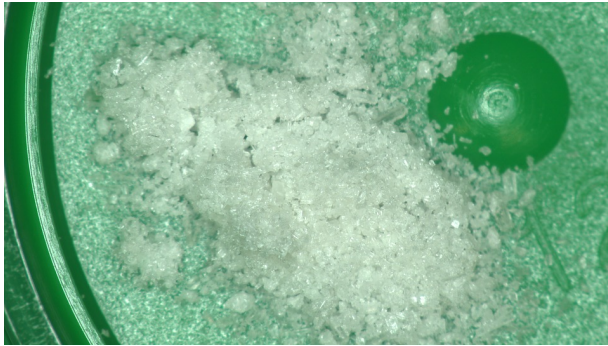
100% Pure Isolate

Montana Certificate of Analysis

Stillwater Laboratories Inc. Olney MT 406.881.2019

| | | | |
|--------------------|-----------|-----------|-------------------|
| total cannabinoids | total THC | total CBD | residual solvents |
| 99.79% | 0.00% | 99.69% | PASS |

concentrate



Potency

| | % | estimated error |
|---|--------|-----------------|
| tetrahydrocannabinolic acid (THCa) | 0.00% | ± 0.02 % |
| Δ ⁹ -tetrahydrocannabinol (Δ ⁹ THC) | 0.00% | ± 0.02 % |
| Δ ⁸ -tetrahydrocannabinol (Δ ⁸ THC) | 0.00% | ± 0.02 % |
| tetrahydrocannabivarin (THCv) | 0.00% | ± 0.02 % |
| cannabidiolic acid (CBDA) | 0.00% | ± 0.02 % |
| cannabidiol (CBD) | 99.69% | ± 1.07 % |
| cannabidivarin (CBDv) | 0.11% | ± 0.04 % |
| cannabigerolic acid (CBGA) | 0.00% | ± 0.02 % |
| cannabigerol (CBG) | 0.00% | ± 0.02 % |
| cannabinol (CBN) | 0.00% | ± 0.02 % |
| cannabichromene (CBC) | 0.00% | ± 0.02 % |

Sample

| | |
|---------------|-------------|
| order number | 253 |
| type | concentrate |
| request date | 2/8/2018 |
| lab ID | 8BA15 |
| sample date | 2/8/2018 |
| batch weight | |
| test date | 2/8/2018 |
| sample weight | 1.48g |
| report due | 2/15/2018 |

Solvents

| | MT limit | 8BA15 | | MT limit | 8BA15 |
|---------------|----------|----------|-----------------|----------|-------|
| propane | 5,000 | 0 ppm | benzene | 2 | 0 ppm |
| butanes | 5,000 | 0 ppm | toluene | 890 | 0 ppm |
| pentanes | 5,000 | 2176 ppm | xylenes | 2,170 | 0 ppm |
| hexanes | 290 | 0 ppm | chloroform | 2 | 0 ppm |
| cyclohexane | 3,880 | 0 ppm | dichloromethane | 600 | 0 ppm |
| heptanes | 5,000 | 0 ppm | | | |
| methanol | 3,000 | 0 ppm | | | |
| isopropanol | 5,000 | 0 ppm | | | |
| acetone | 5,000 | 0 ppm | | | |
| ethyl acetate | 5,000 | 0 ppm | | | |

all solvent values in PPM

◇ All testing was completed onsite at 6073 US93N, Olney MT according to the methods and standards listed. Methods may be obtained on request from the Director, Stillwater Laboratories.

◇ All attempts have been made to ensure accuracy and integrity of the results. However, Stillwater Laboratories cannot guarantee results or endorse quality of products beyond the test articles submitted.

◇ Potency (cannabinoid concentration) is calculated from the equation: [cannabinoid] = [cannabinoid]_{HPLC} x volume_{dilution} / m. Terpene concentration is calculated from the equation: [terpene] = (terpene mass)_{GCMS} / m. Solvent concentration is calculated from the equation: [solvent] = (solvent mass)_{GCMS} / m.

◇ Standards are run in the same batch as the reported values. These standards are used to recalibrate the resulting data and estimate error using a standard estimate of error method; this is combined with error from weighing and dilution using the propagation of error formula $s_y^2 = \sum (\partial f / \partial i)^2 s_i^2$ where i is the contributor to error. The 95% confidence range is calculated from the equation: (concentration) ± $t_{CL90} \times s_y$.

◇ Sampling error is not considered in error calculations.

Certified by:

Ron D. Brost, PhD (Chem) PEng (Chem)
Director and Owner, Stillwater Laboratories Inc.
406-881-2019 rdb@stwlabs.com

Printed 2/28/2018 10:22 AM

Methods

| | method | equipment | reference material |
|----------|--------|---------------|--------------------|
| sampling | AD8BM | | |
| FMI | IN8BM | YSC HD801m12 | |
| weights | MA8BM | AUX120.1 | MA8BAS |
| potency | PO8BM | LC-2030C | PO8BAS |
| solvents | SO8BM | QP2020 / HS20 | SO8BAS |



Stillwater Labs respects your privacy and values the security of your information. All data in this report is encrypted and resides in international servers in cannabis-friendly countries.

